

The Critical Energy Infrastructure (CEI) Hub is a Ticking Time Bomb

Why is that a statewide danger?

Join us for an online presentation and explore solutions!

Date: Wednesday, May 28 at 7:00 pm

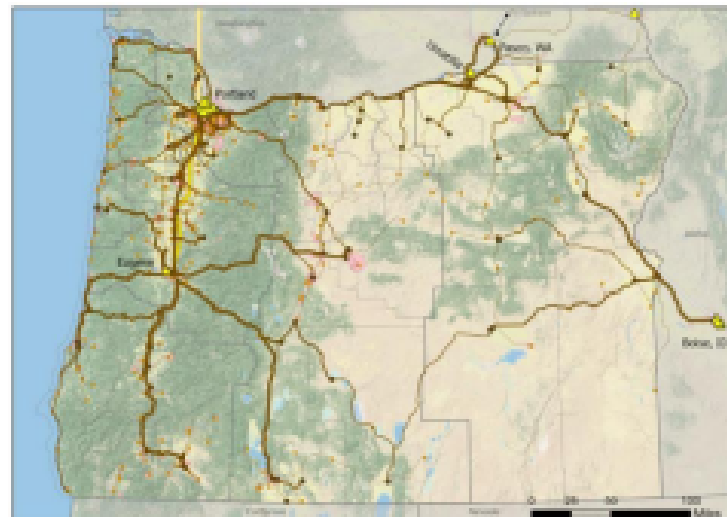
For Zoom link, register here or use QR code: <https://tinyurl.com/CEIHub2025>

Speakers: Nikki Mandell, CEI Hub Task Force & Laura Rogers, Community for Earth



What is the Critical Energy Infrastructure [CEI] Hub? Houses bulk storage tanks for Oregon's liquid fuels

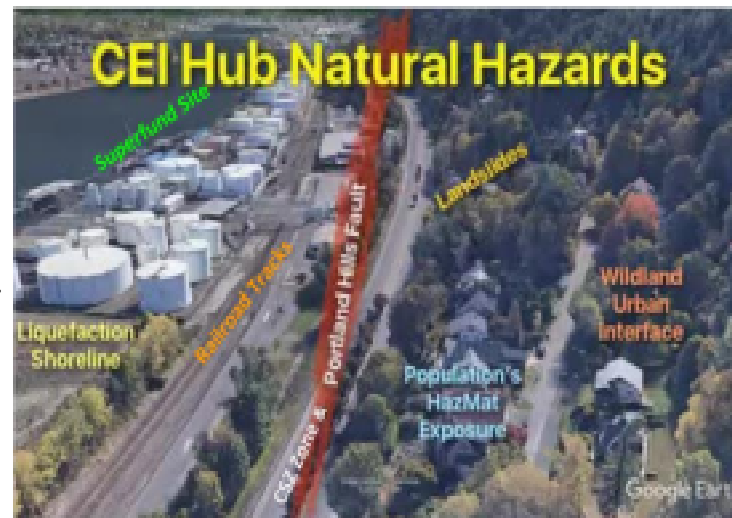
- Stores 90% of all liquid fuels used throughout the state (gas, diesel, oil), 100% of jet fuel, and more than 150 chemicals used by Oregon companies; houses an electrical substation, pipelines, RR lines, docks.
- Houses more than 600 above-ground storage tanks; over 400 tanks are in active use.
- Contains more than 350 million gallons of fuels and chemicals (530 Olympic-sized swimming pools).
- Spans 200 acres, along a 6-mile stretch of land between the Willamette River and Hwy 30 in north Portland.
- Owned and operated by ten private corporations.



CEI Hub-centered diesel distribution statewide

Why is the CEI Hub a Ticking Time Bomb?

- **Earthquake.** Storage tanks and pipelines sit on unstable land within two earthquake zones.
- **Wildland-Urban Interface Fire.** Millions of gallons of combustible and flammable fuels border Forest Park, one of the largest urban parks in the country.
- **Train Derailment.** Tracks carry fuel, freight, and passengers through the Hub. On average, 3 derailments per day in the US; in Oregon over 20 in the last 2 years.
- **Without the Hub, the ability to transfer liquid fuel throughout Oregon is vastly diminished.**
- **Limited capacity to control:** catastrophic spills, releases.



Sponsored by:

- Community for Earth, First Unitarian Portland
- League of Women Voters of Oregon
- 350Eugene
- League of Women Voters of Portland

