

Portland Charter Amendment Drawing Council Districts

Presentation to LWVPDX 6/26/2023

By Melanie Billings-Yun

Changing Electoral Landscape

Current system:

- Four City Commissioners elected at-large

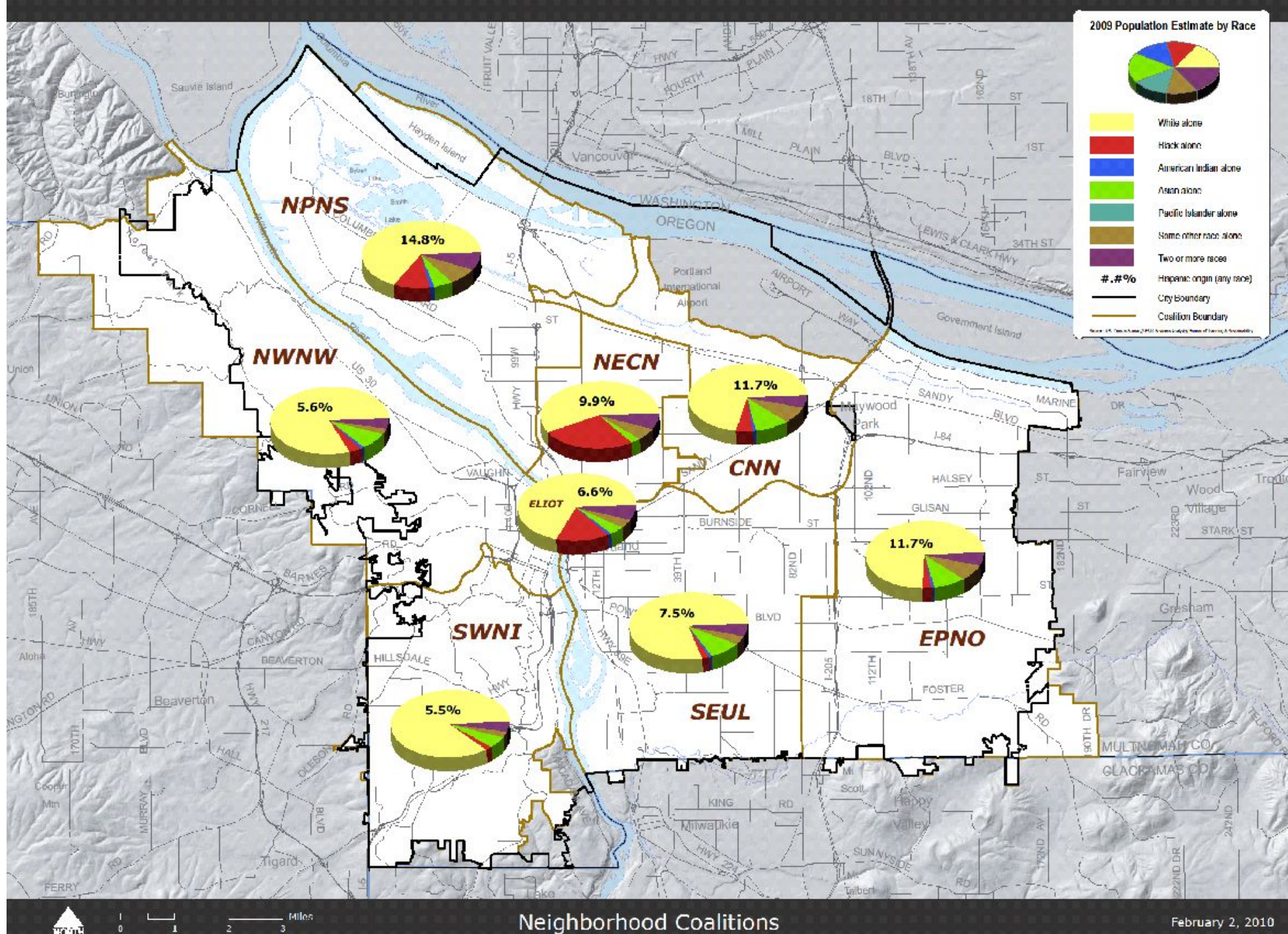
New system:

- 12 City Councilors elected by and representing 4 districts
- Portland 2020 census population 652,503 = 163,125 per district
- Districts drawn by 13-member independent commission

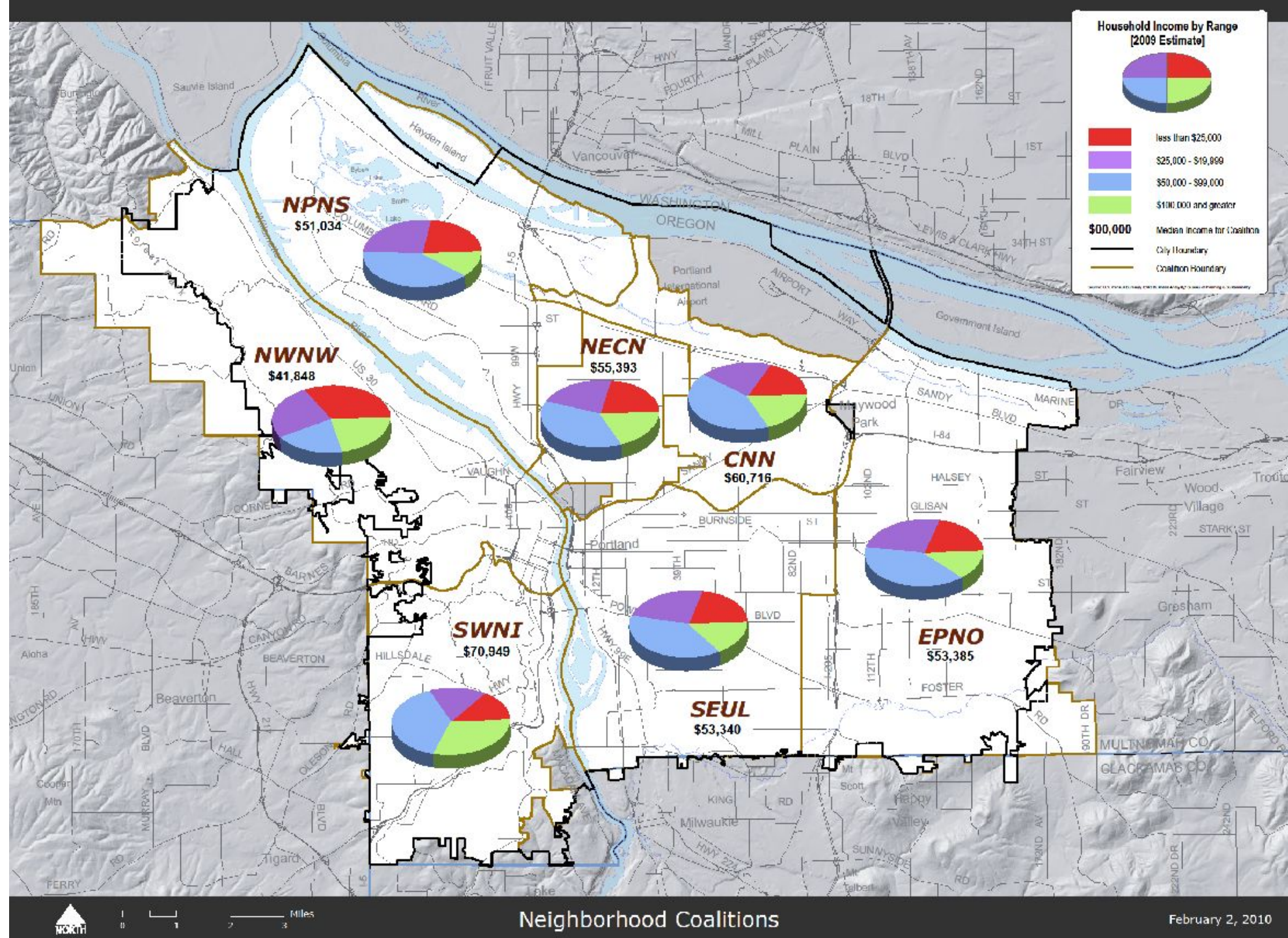
Reasons for multi-member districts:

- Promotes ethnic, gender, income, and political diversity
- Better representation of all voters
- Encourages collaboration, broader outlook
- Less gerrymandering
- Works especially well with geographically spread groups

Portland Racial Makeup



Household Income Spread



District Drawing Criteria

As set out in the Charter, the districts must:

- be contiguous and compact,
- utilize existing geographic or political boundaries,
- not divide communities of common interest,
- be connected by transportation links, and
- be of equal population (within 5%)

Other considerations by the Independent District Commission

- School districts · Ethnic/racial makeup
- Neighborhood boundaries · Historic legacy
- Economic assets · Income levels

Three Proposed Maps

Points of Agreement

- All communities east of I-205 are in a single district
- Port of Portland in East district
- District lines respect the non-PPS school district boundaries
- All communities west of the Willamette are in a single district
- St Johns is in the north district
- Historic Albina is held together

Points of Disagreement

- What part of the eastside to combine with the westside
- Division of neighborhoods
- Distribution of public / economic assets

Central City Plan--Eastside

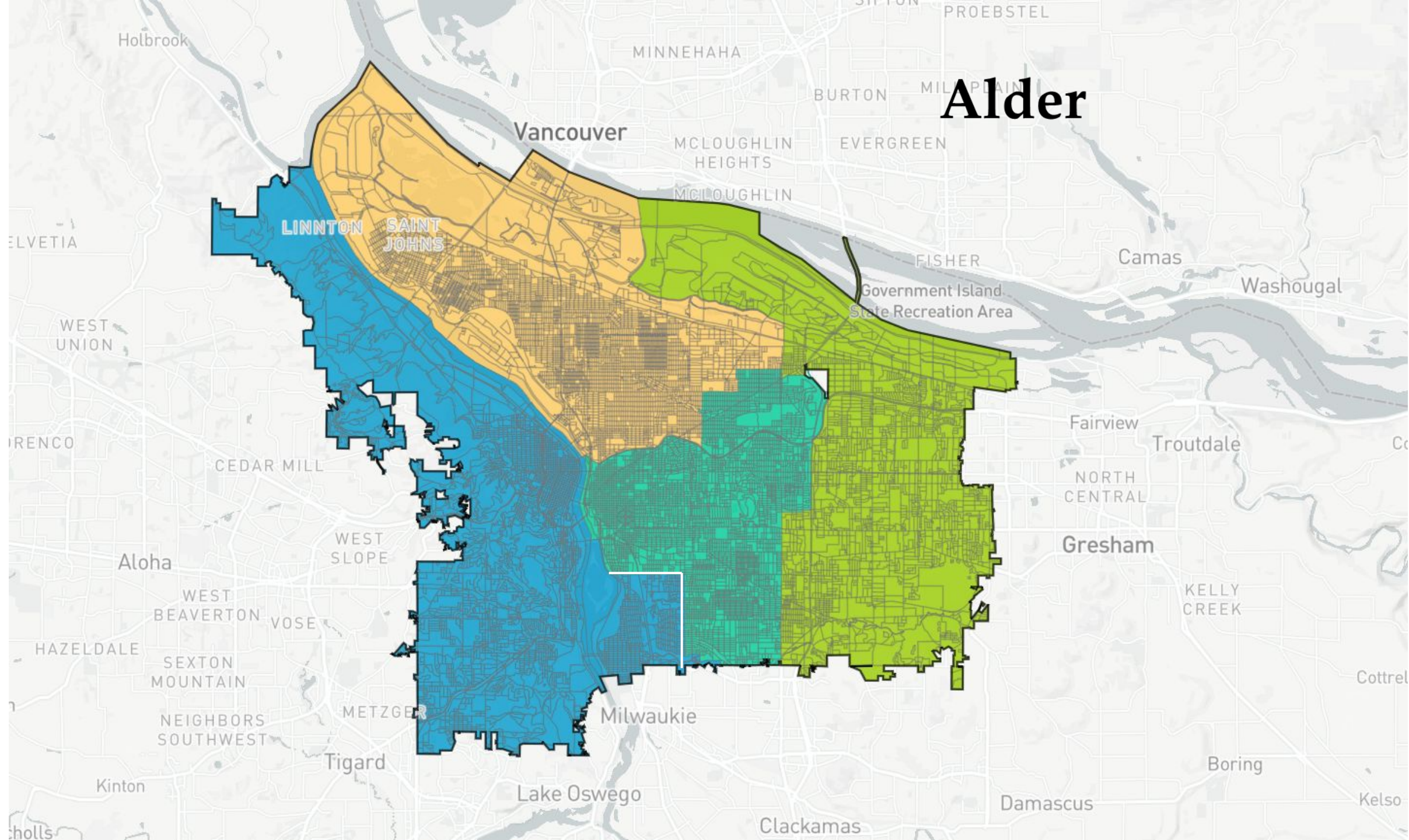
Map 1.1
Central Eastside Street Plan Project Area



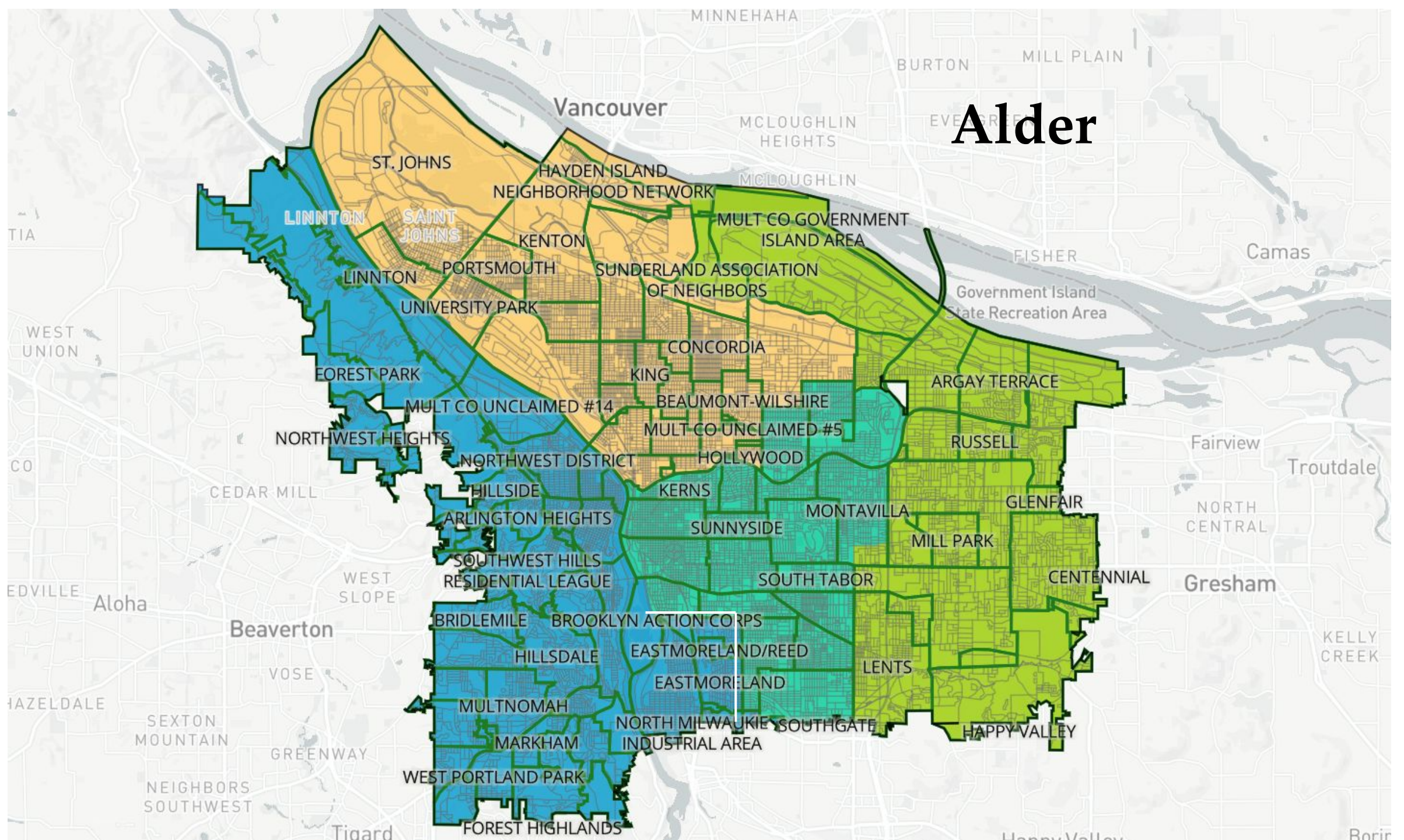
Key Factors: Alder

- Built around **preserving neighborhood boundaries**
- Sellwood and Moreland added to westside district
 - Demographically and socio-economically similar
- Divides the Central City Plan area among three districts
 - Promotes broad engagement with central city issues
 - Distributes significant assets and institutions among all districts
- **Cons:**
 - Only connected by Sellwood Bridge
 - Opposition from Sellwood-Moreland

A map of Alameda County, California, highlighting the three cities of the East Bay: Alameda (yellow), Fremont (orange), and Newark (blue). The map shows the cities' locations relative to each other and to surrounding areas like Vancouver, Milpitas, and the Government Island State Recreation Area. The cities are labeled in large, bold letters: ALAMEDA, FREMONT, and NEWARK. The map also shows the San Francisco Bay and the surrounding land.



Alder



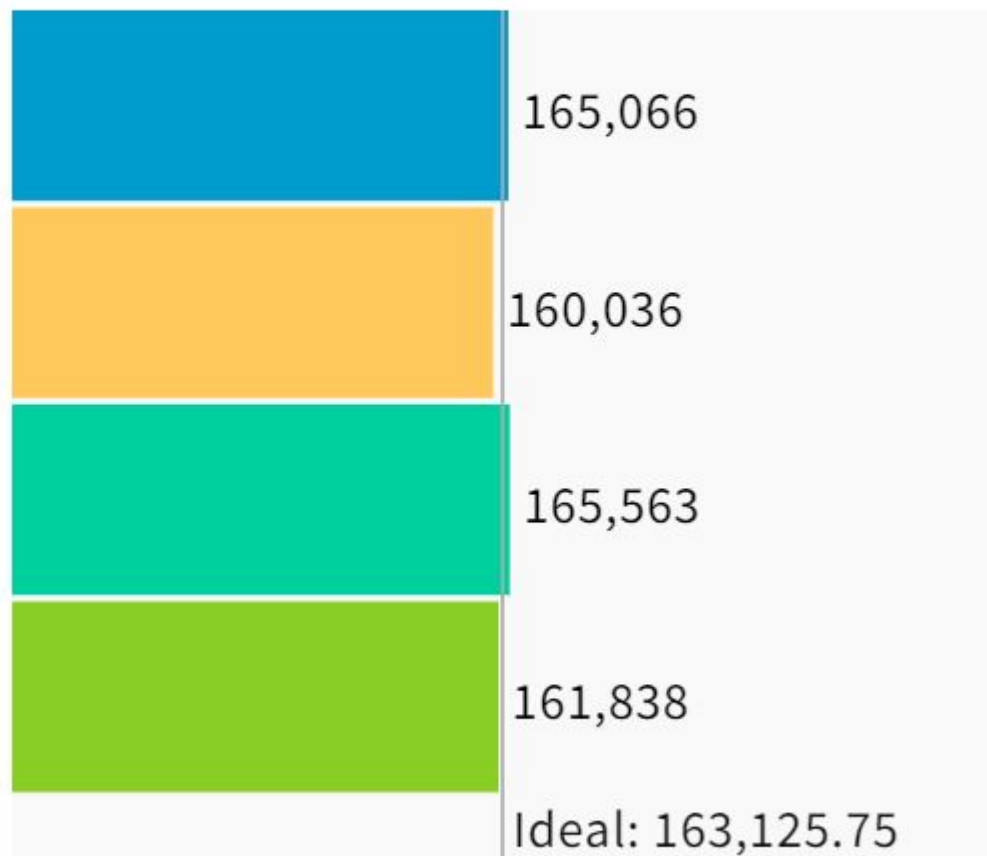
Population

Data Layers

Evaluation

Population Balance

① Uses 2020 Decennial Census population with processing by FLO-Analytics on 2020 Blocks.



Alder

Population

Data Layers

Evaluation

Population by Race

COMPARE

Asian population



WITH

Hispanic population



AND

Black population

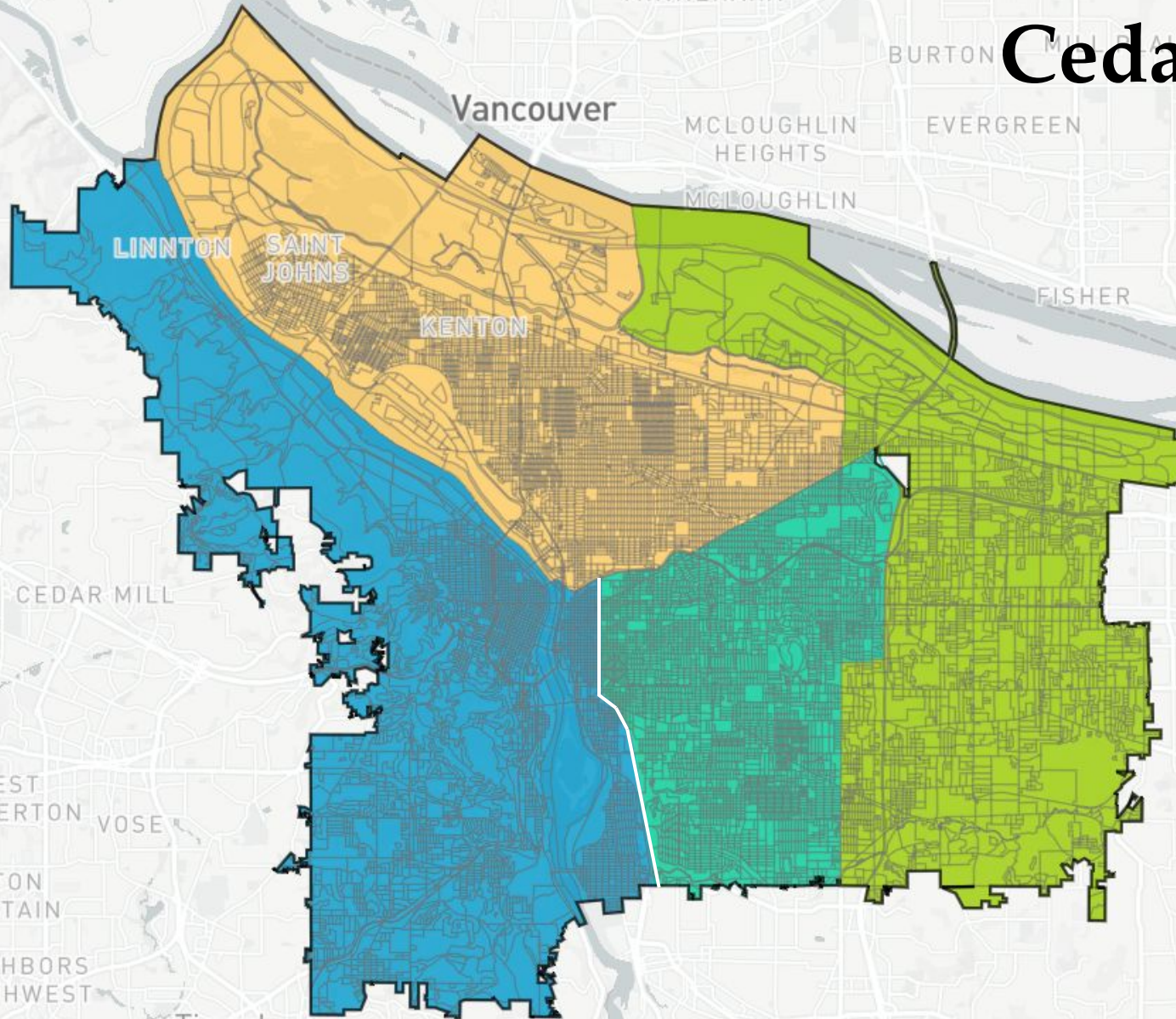


	Asian	Hispanic	Black
1	6.6%	7.4%	2.6%
2	4%	12.5%	8.8%
3	7.1%	8.7%	2.9%
4	14.4%	15.9%	8.4%
Overall	8%	11.1%	5.7%

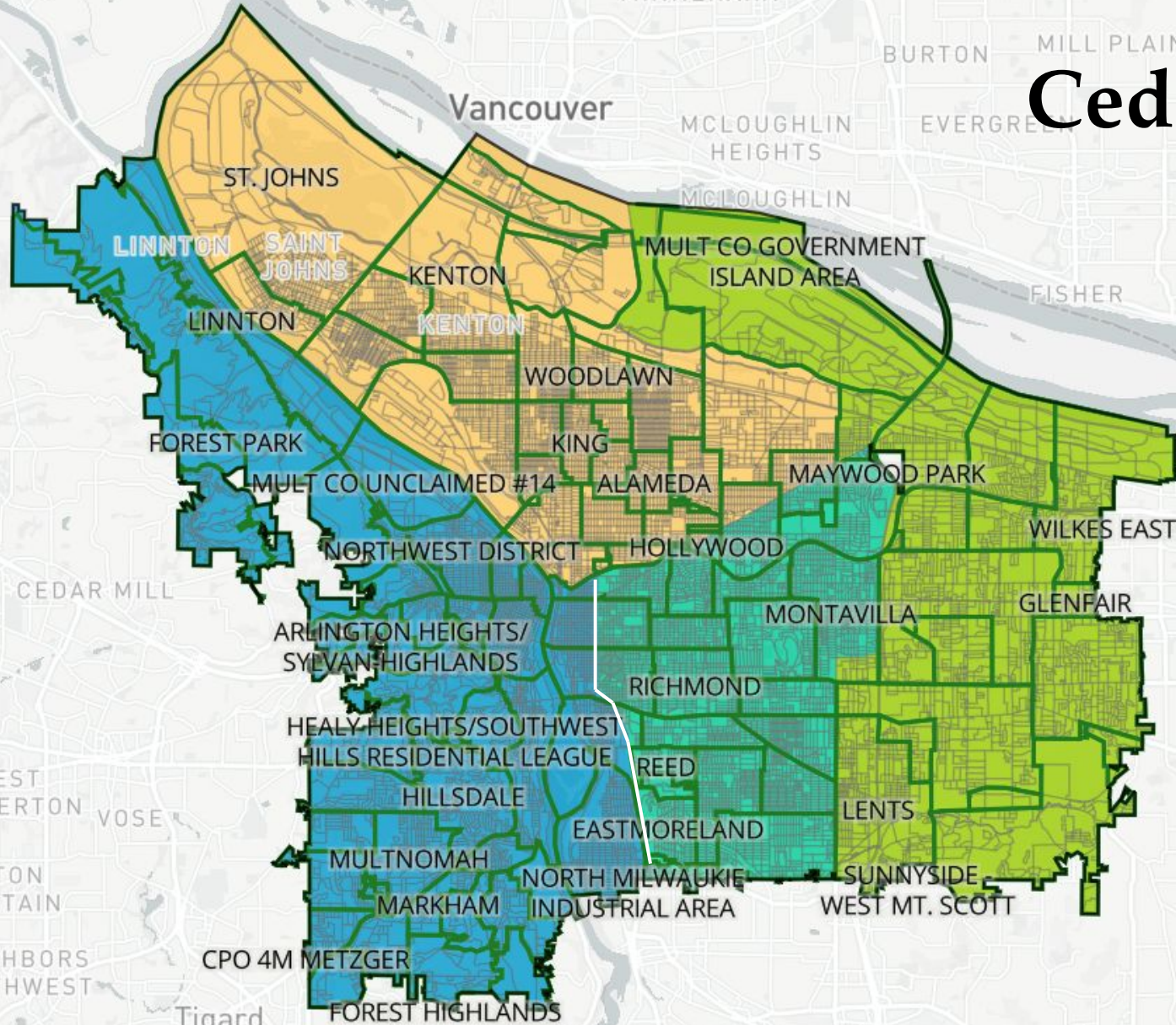
Key Factors: Cedar

- Built around **prioritizing transit corridors**
- Eastside along the Willamette up to 11th Ave ./ McLoughlin Ave along MAX and bus lines are added to westside district
- Runs north-central divide along Sandy
- **Cons:**
 - Cuts through several neighborhoods
 - Southern half of the Eastbank Esplanade and Central City Plan joins with westside

Cedar



Cedar



Population

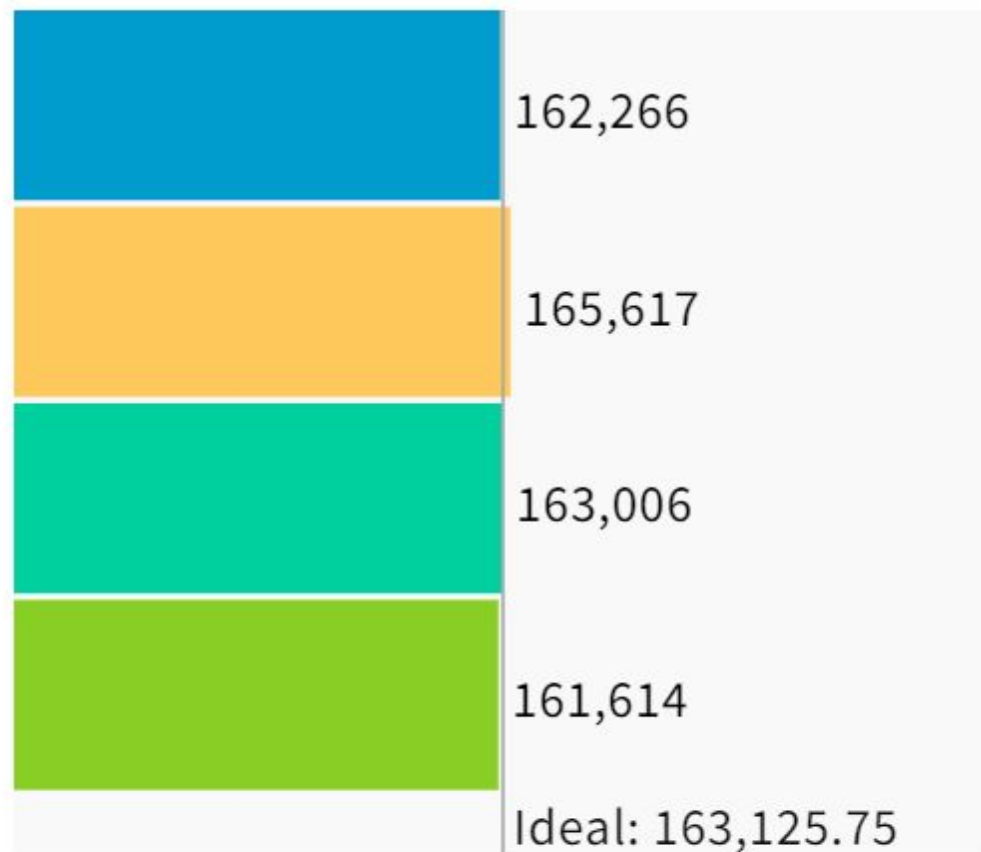
Data Layers

Evaluation

Cedar

Population Balance

① Uses 2020 Decennial Census population with processing by FLO-Analytics on 2020 Blocks.



UNASSIGNED POPULATION: 0

MAX. POPULATION DEVIATION: 1.53%

Population by Race

COMPARE Asian population

WITH Hispanic population

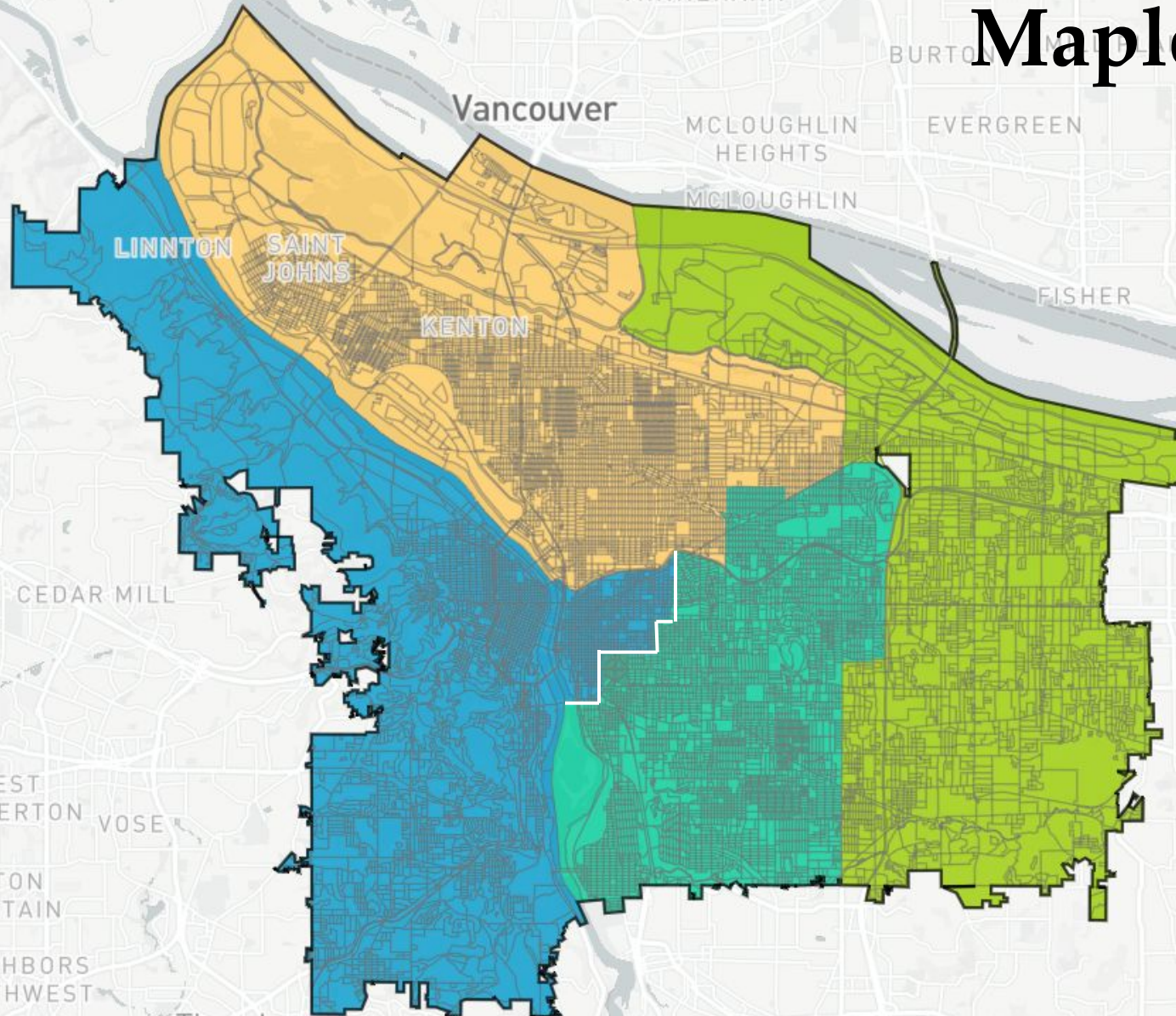
AND Black population

	Asian	Hispanic	Black
1	6.5%	7.6%	2.8%
2	4%	12.3%	8.6%
3	7.2%	8.6%	2.8%
4	14.4%	15.9%	8.5%
Overall	8%	11.1%	5.7%

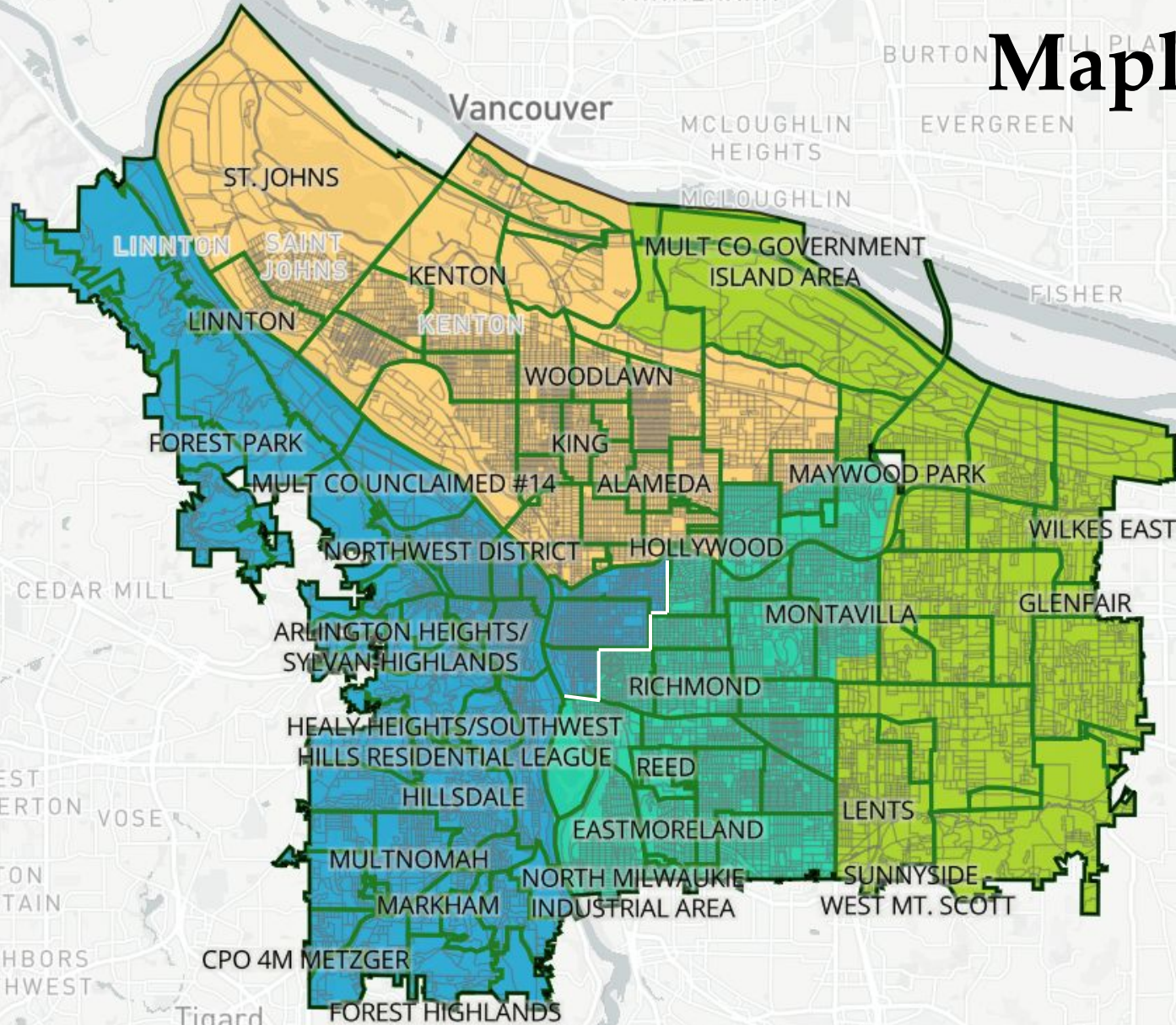
Key Factors: Maple

- Built around **keeping much of the central city together**, as defined by the Central City 2035 Plan
- Adds Kerns, Buckman and Hoffman-Abernathy (but not Ladd's Addition), I-84 to Powell, to westside
- Combines the city's most urbanized and commercial neighborhoods and areas with high percentages of renters.
- **Cons:**
 - Puts bulk of public assets in westside
 - SE district left out of Central City Plan

Maple

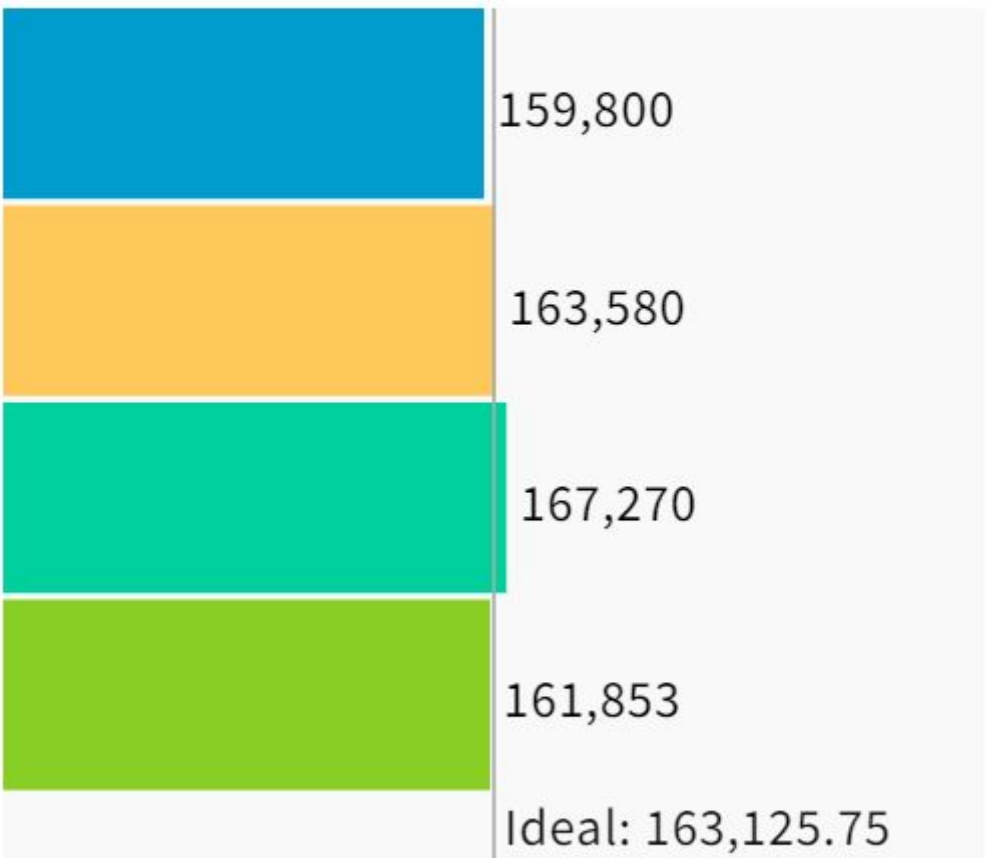


Maple



Population Balance

Uses 2020 Decennial Census population with processing by FLO-Analytics on 2020 Blocks.



UNASSIGNED POPULATION: 0

MAX. POPULATION DEVIATION: 2.54%

Maple

Population by Race

COMPARE Asian population

WITH Hispanic population

AND Black population

	Asian	Hispanic	Black
1	6.6%	7.8%	2.9%
2	4%	12.4%	8.7%
3	7.1%	8.2%	2.7%
4	14.4%	15.9%	8.4%
Overall	8%	11.1%	5.7%

District Hearings Schedule

- July 5, 6-8 PM, East Portland Community Center, 740 SE 106th
- July 6, 6-8 PM, Taborspace, 5441 SE Belmont
- July 8 12-2 PM, APANO, 8188 SE Division
- July 9, 1-3 PM, SW Community Center, 6820 SW 45th
- July 12, 6-8 PM, Portland Building, 1120 SW 5th
- July 13, 6-8 PM, Self Enhancement, Inc., 3920 N. Kerby Ave.
- July 14, 12-2 PM, hosted virtually via Zoom
- July 15, 12-2 PM, Charles Jordan Community Center, 9009 N Foss
- July 16, 1-3 PM, Youth PDX, 16126 SE Stark